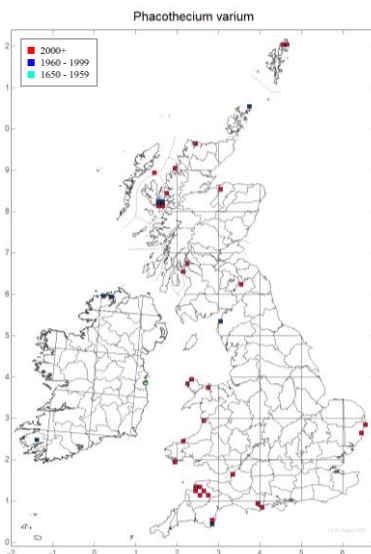
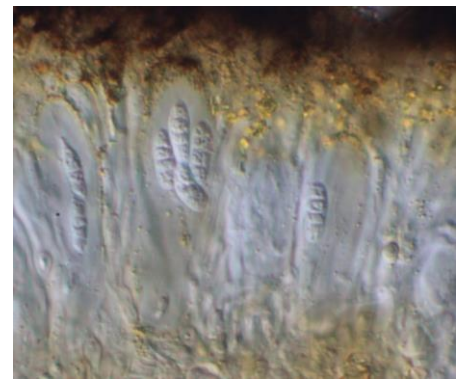
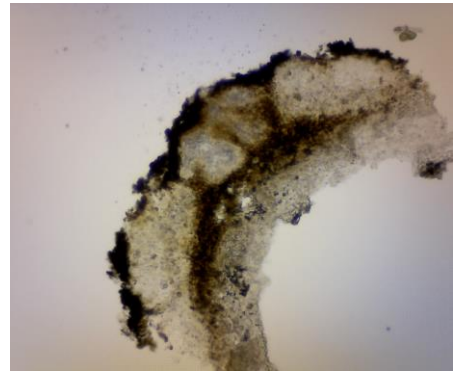
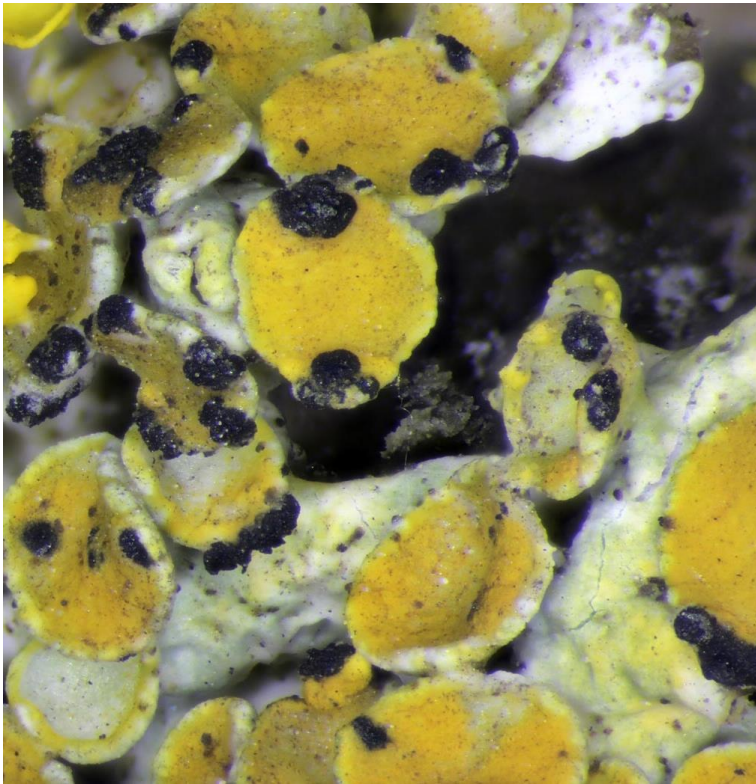


Phacothecium varium



Identification: Previously known as *Opegrapha physicaria*. Irregular, black gall-like growths on bleached areas of *Xanthoria parietina*. Early growths are immersed. Each black structure contains one or more apothecia and, sometimes, also pycnidia. Asci are broadly club-shaped and contain eight 4-celled ascospores.

Similar species: No other lichenicolous fungi on this host have 4-celled spores or have multiple fruiting bodies within one structure.

Habitat: Parasitic on thallus and apothecia of *Xanthoria parietina*.

Distribution: Nationally rare. Mainly coastal.

References: <http://fungi.myspecies.info/all-fungi/phacothecium-varium>

Atienza (1992) *Anales Jardín Botánico de Madrid* 50: 159-162 describes this fungus under the previous name *Opegrapha physicaria*.