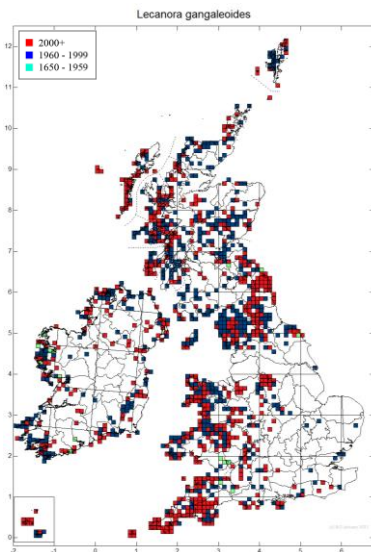
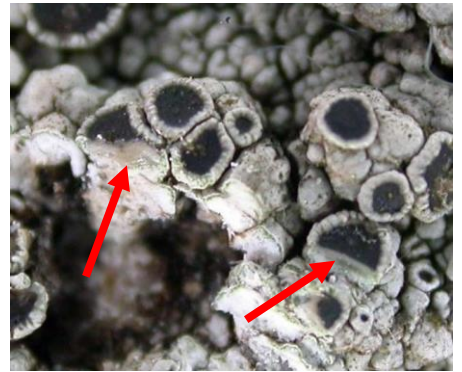


Lecanora gangaleoides



Identification: Thallus smooth or warty, grey but often with a green/brown tinge. Usually fertile, with apothecia to 2mm across with a black disc and a wide pale grey margin. Cutting through an apothecium shows the pale green interior. If the thallus is scratched, it usually reveals an orange pigment.

Chemistry: Thallus K+ yellow, P+ yellow/red, UV- or pale orange.

Similar species: Easily confused with *Tephromela atra* but cutting through an apothecium of *T. atra* shows a dark purple interior.

Habitat: Common on siliceous rocks, especially near the sea, but also locally inland. More rarely found on worked wood.

Distribution: Widespread but infrequent in central and south-eastern England.