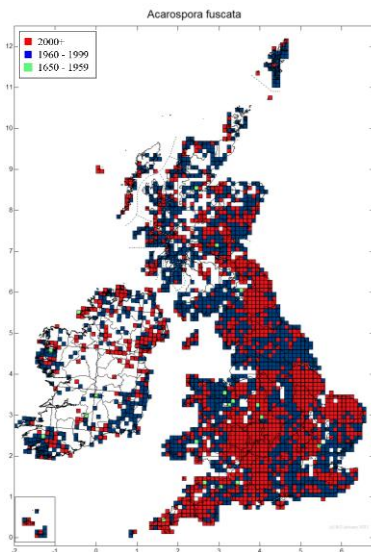
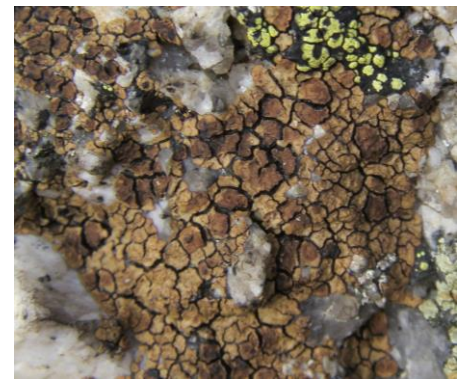


# *Acarospora fuscata*



**Identification:** This is a finely cracked crust with angular segments that are usually smooth and look rather like dried brown mud. Where the crust is thicker the surface will be more uneven and rough. Darker red-brown to black apothecia are frequent but sunken in the areoles, giving a characteristic mottled appearance to the thallus.

**Chemistry:** C+ red.

**Similar species:** Other similar *Acarospora* species are much less widespread.

**Habitat:** On siliceous rock including drystone walls and gravestones, especially in nutrient-enriched agricultural areas and on bird-perching stones.

**Distribution:** Common throughout Britain in suitable habitats.